

# GH1007FC

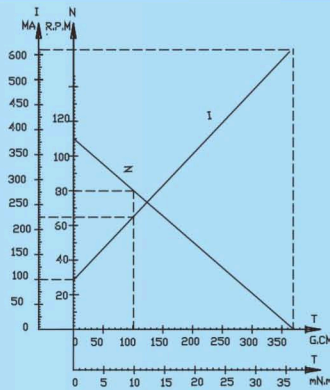
## Planetary Gearbox Series

Applications: Medical equipment, security equipment, audio and visual products, high-end toys, personal health care products and so on.

### Characteristics

			-1012F050-2.5
1	Voltage	V	2.5
2	Terminal resistance	$\Omega$	3.7
3	No-load speed	rpm	110
4	No-load current	mA	100
5	Max. torque	mNm	37.2
6	Load torque	mNm	9.8
7	Load speed	rpm	80
8	Load current	mA	230
9	Reduction ratio		1/171
10	Weight	g	3.8
11	Operating temperature range	$^{\circ}\text{C}$	-10~+70

### Characteristics Curve



GH1007FC-1012F050-2.5

### Options

- Lead wires length
- Special coils

### Outline Drawing

UNIT:mm

