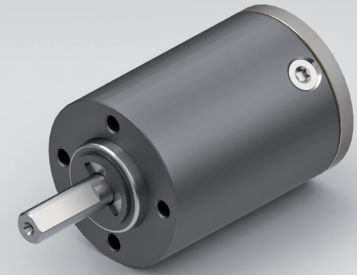


Standard scope of delivery Gearbox lubricated for duration of service life, dust-proof package, motor pinion, mounting screws, paper gasket and assembly instructions (adapter plate optional).

Customized versions also available for small quantities.

Stainless steel version on request.

PLANETARY GEARBOX GPL026



		1-STAGE	2-STAGE	3-STAGE	
Ratio i:1	Max. motor shaft- $\varnothing D$	Ratio i:1	Max. motor shaft- $\varnothing D$	Ratio i:1	Max. motor shaft- $\varnothing D$
				81.37	4
				112.67	4
				143.97	4
18.78	4	199.33	4		
3.5	4	26	4	216	2
4.33	4	33.22	4	276	2
6	2	46	2	352.67	2

Rated torque continuous	Type Standard	Type R	Nm	0.3	1	3
Rated torque intermittent	Type Standard	Type R	Nm	0.6	2	6
Rated torque continuous	Type V		Nm	0.6	2	3
Rated torque intermittent	Type V		Nm	1.2	3	6
Max. efficiency at rated torque			%	90	85	80
Average backlash at no load	Type Standard	Type V	arcmin \leq	20	35	50
Average backlash at no load	Type R		arcmin \leq	10	20	30
Weight without adapter plate			g	70	90	115
Dimension L			mm	25	33	41
Dimension A			mm	5		
Dimension B			mm	14		
Max. radial load	F _R	7 mm from shaft end	N	50		
Max. axial load	F _A		N	40		
Max. continuous rated speed at drive			min ⁻¹	6000		
Max. intermittent rated speed at drive			min ⁻¹	10000		
Temperature range	Type Standard	Typ R	°C	-30 / +90		
Temperature range	Type V		°C	-40 / +90		

Type V = heavy duty version | Type R = reduced backlash version

Changes reserved © GYSIN AG | 05/2015